

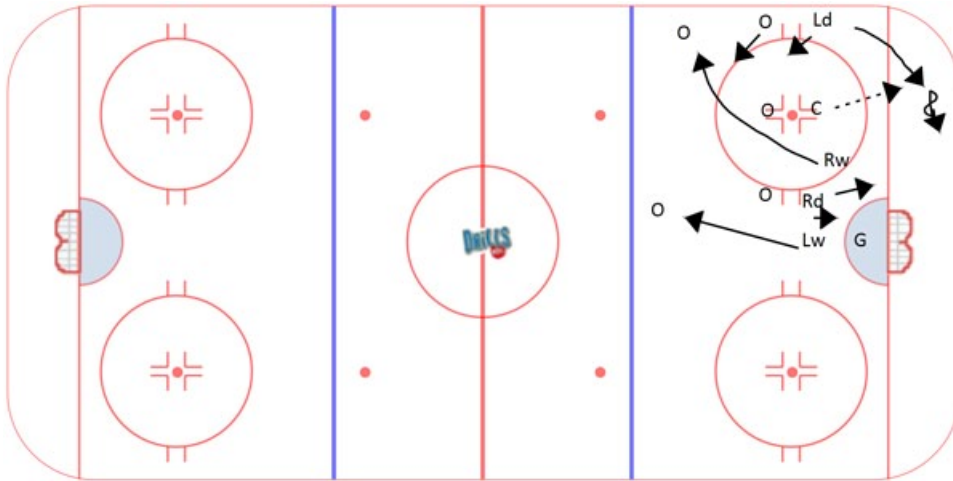


Coaching

DEFENSIVE ZONE FACE-OFF

- always be prepared to play as the draw is lost be prepared to apply pressure to your responsibility immediately
- center on center maintain D side positioning
- D are responsible for wingers and are ready to move out to the slot
- wingers must get out quickly on shooter and are responsible for the points
- wingers must be ready to switch if blocked out.

Five Across Alignment



- D are aligned on off side to allow improved handling off the puck
- C . can't lose the draw, tie up center
- LD . recovers puck if it is won toward the boards. If draw is lost, cover winger to the net and stay with winger if the player moves behind the center to recover the puck
- RW . goes to the slot and/or board side D
- RD . helps RW get through and if draw is lost, falls back to the net
- LW . moves out to the point. Line up on angle to see if draw is won or lost. If draw is won, player quickly moves to breakout position
- if draw is won, run a set breakout play.